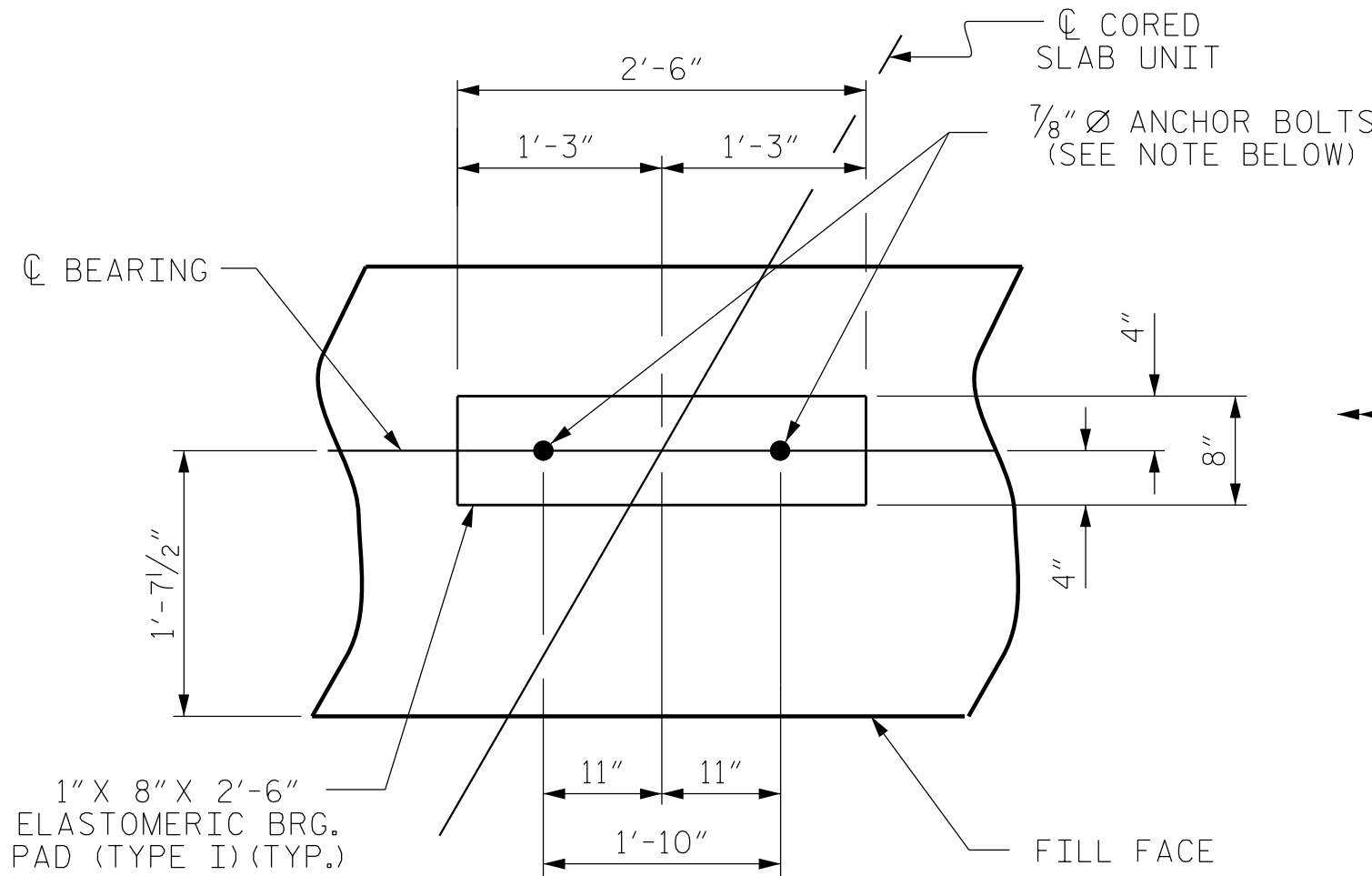


CORROSION PROTECTION  
FOR STEEL PILES DETAIL  
(END BENT No.1 SHOWN, END BENT No.2 SIMILAR BY ROTATION)

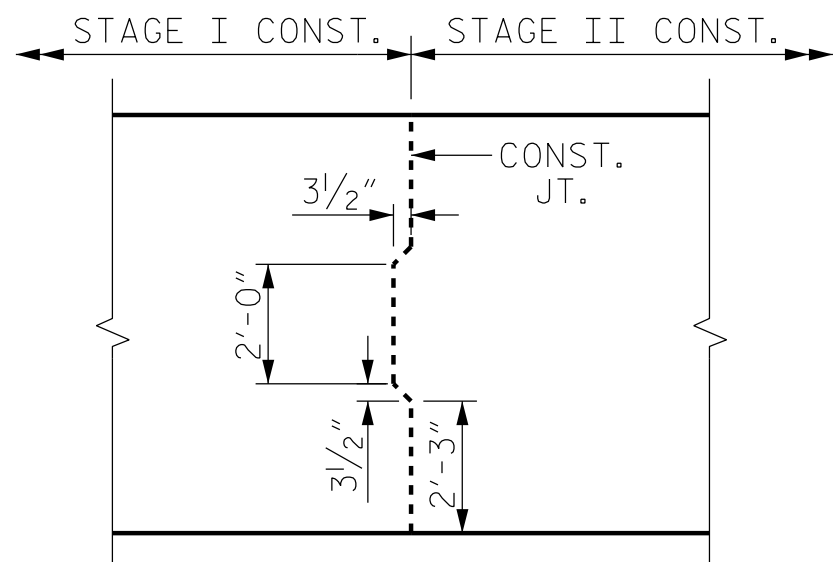


DETAIL "A"  
(END BENT No.1 SHOWN, END BENT No.2 SIMILAR BY ROTATION)

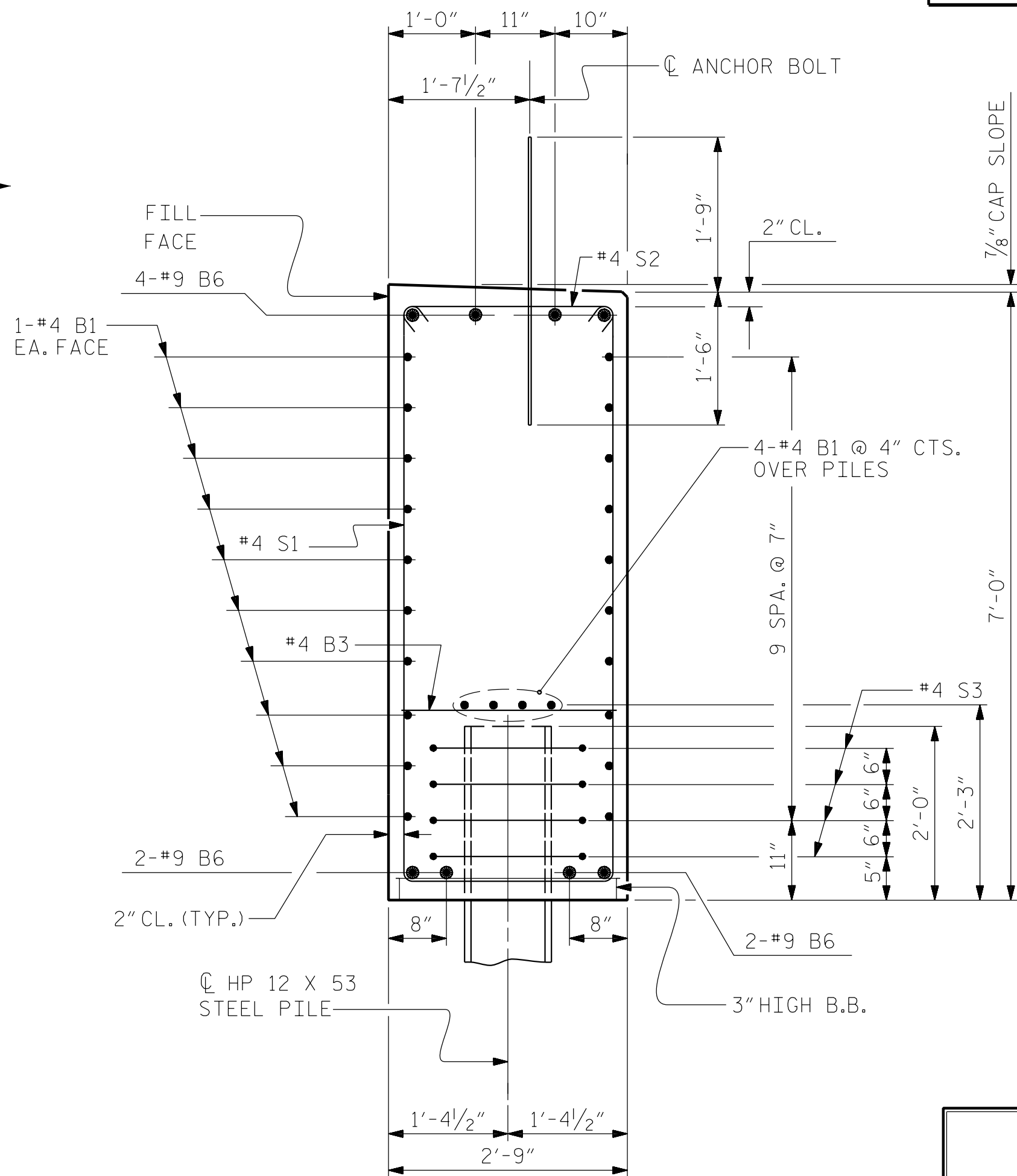
ANCHOR BOLTS SHALL MEET THE REQUIREMENTS OF ASTM A449. ANCHOR PLATES, WASHERS, AND NUTS SHALL MEET THE REQUIREMENTS OF THE STANDARD SPECIFICATIONS. ANCHOR BOLTS, ANCHOR PLATES, WASHERS, AND NUTS SHALL BE GALVANIZED IN ACCORDANCE WITH THE STANDARD SPECIFICATIONS.

NO SEPARATE PAYMENT SHALL BE MADE FOR THE ANCHOR BOLTS, ANCHOR PLATES, WASHERS, AND NUTS. THE COST OF THE MATERIAL AND INSTALLATION SHALL BE CONSIDERED INCIDENTAL TO VARIOUS PAY ITEMS.

ANCHOR BOLTS, NUTS AND WASHERS SHALL BE GALVANIZED IN ACCORDANCE WITH THE STANDARD SPECIFICATIONS.

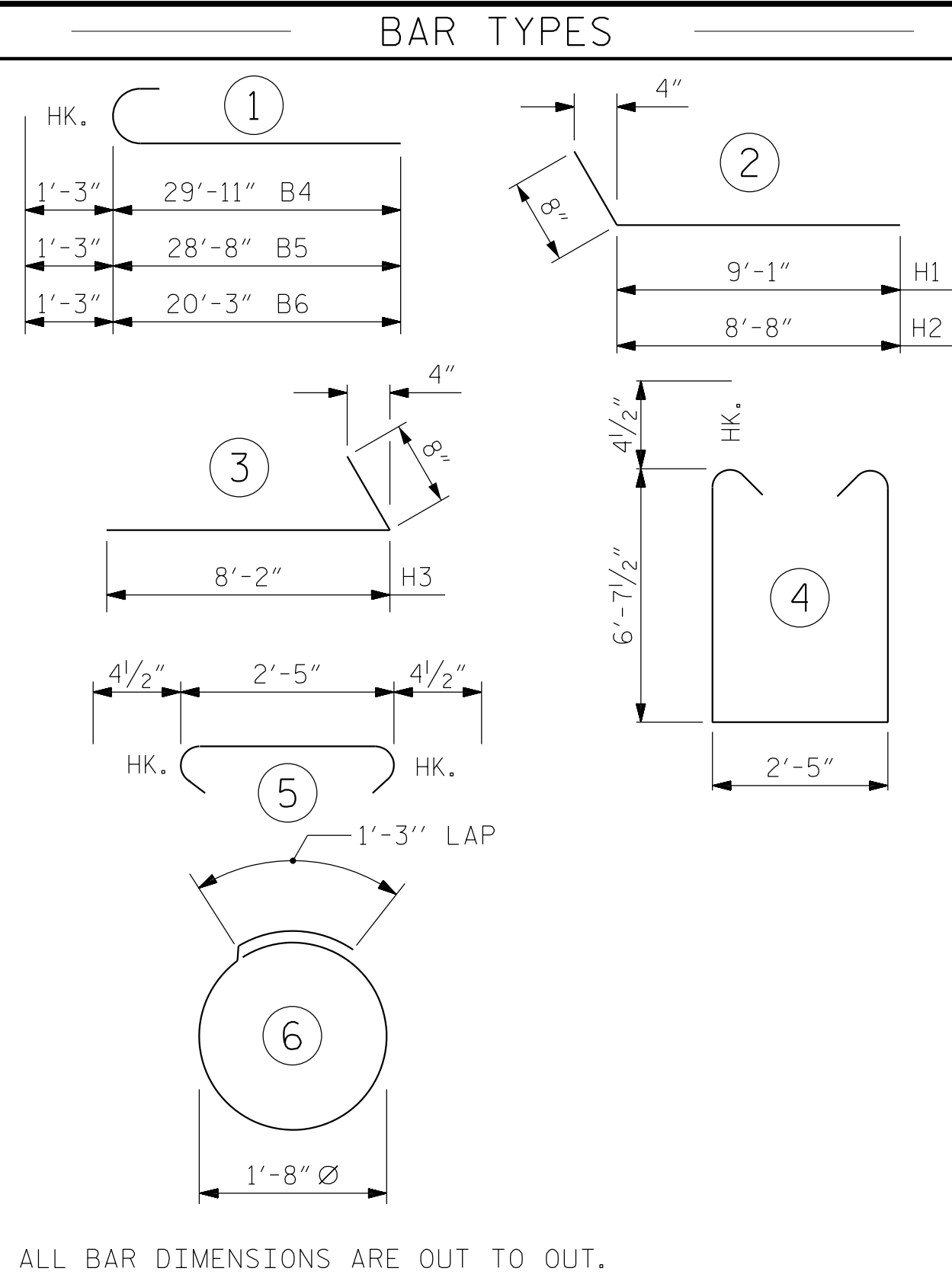


DETAIL "B"



SECTION A-A

(CONCRETE COLLAR NOT SHOWN FOR CLARITY. SEE "CORROSION PROTECTION FOR STEEL PILES DETAIL.")



ALL BAR DIMENSIONS ARE OUT TO OUT.

BILL OF MATERIAL					
END BENT No.1					
BAR	NO.	SIZE	TYPE	LENGTH	WEIGHT
B1	24	#4	STR	20'-3"	325
B2	24	#4	STR	27'-0"	433
B3	12	#4	STR	2'-5"	19
B4	4	#9	1	31'-2"	424
B5	4	#9	1	29'-11"	407
B6	8	#9	1	21'-6"	585
H1	14	#4	2	9'-9"	91
H2	14	#4	2	9'-4"	87
H3	28	#4	3	8'-10"	165
K1	16	#4	STR	3'-3"	35
S1	56	#4	4	16'-5"	614
S2	56	#4	5	3'-2"	118
S3	28	#4	6	6'-6"	122
V1	53	#4	STR	9'-0"	319
REINFORCING STEEL					3744 LBS.
CLASS A CONCRETE BREAKDOWN					
POUR #1: CAP, LOWER PART OF WINGS & COLLARS				33.6 C.Y.	
POUR #2: UPPER PART OF WINGS				2.2 C.Y.	
TOTAL CLASS A CONCRETE				35.8 C.Y.	
HP 12 X 53 STEEL PILES					
				NO: 7	LIN. FT.= 125
PILE DRIVING EQUIPMENT SETUP FOR HP 12 X 53 STEEL PILES					
				NO: 7	
PILE EXCAVATION IN SOIL					
				66.0 LIN. FT.	
PILE EXCAVATION NOT IN SOIL					
				21.0 LIN. FT.	

PROJECT NO. BP14.R006  
POLK COUNTY  
STATION: 12+92.50 -L-

SHEET 4 OF 5

STATE OF NORTH CAROLINA DEPARTMENT OF TRANSPORTATION RALEIGH					
SUBSTRUCTURE					
END BENT No.1 DETAILS					
REVISIONS					
NO.	BY:	DATE:	NO.	BY:	DATE:
1			3		
2			4		
SHEET NO. S-17					TOTAL SHEETS 20

STD. NO. EB\_33\_60S4

ASSEMBLED BY : J. M. DAVIS	DATE : 6/23
CHECKED BY : R. C. LARSON	DATE : 6/23
DRAWN BY : WJH 12/II	REV. 4/17
CHECKED BY : AAC 12/II	MAA/THC

DESIGN ENGINEER OF RECORD: R. C. LARSON DATE : 6/23

10/9/2025 11:23:31 AM



DOCUMENT NOT CONSIDERED FINAL  
UNLESS ALL SIGNATURES COMPLETED

